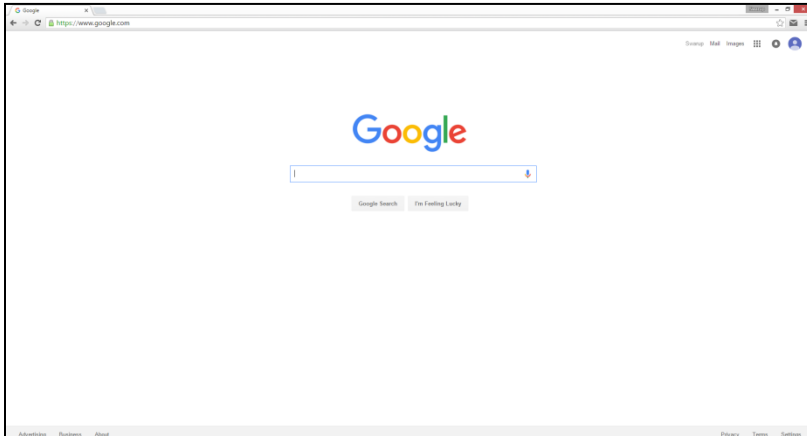


Configuring Dynamic Domain Name Service

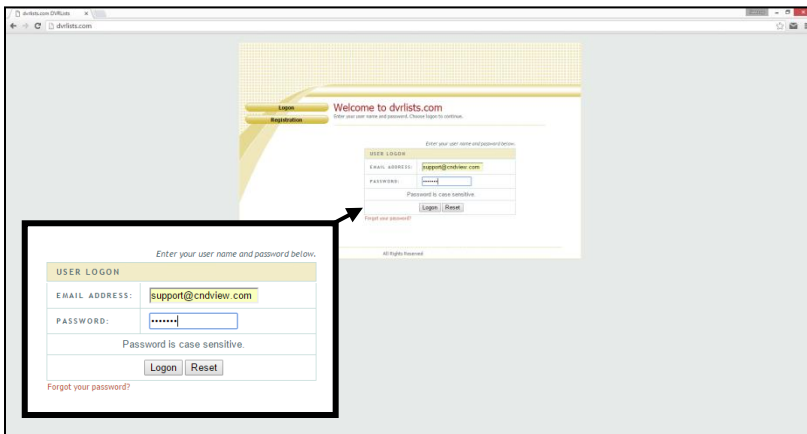
1. Open **Internet Browser** (Chrome, or Internet Explorer)



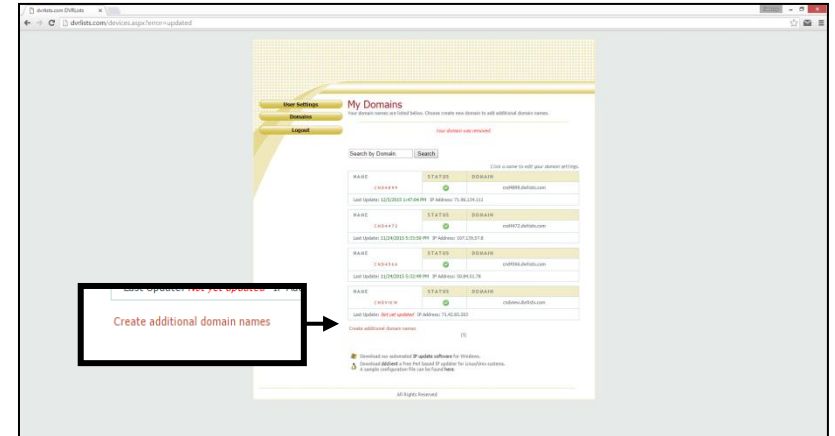
2. Navigate to **<http://www.dvrlists.com>**
*First Time Users: **Click** on **Registration** link to register a new account*

3. Login Information
Enter Email Address and Password associated with DDNS account

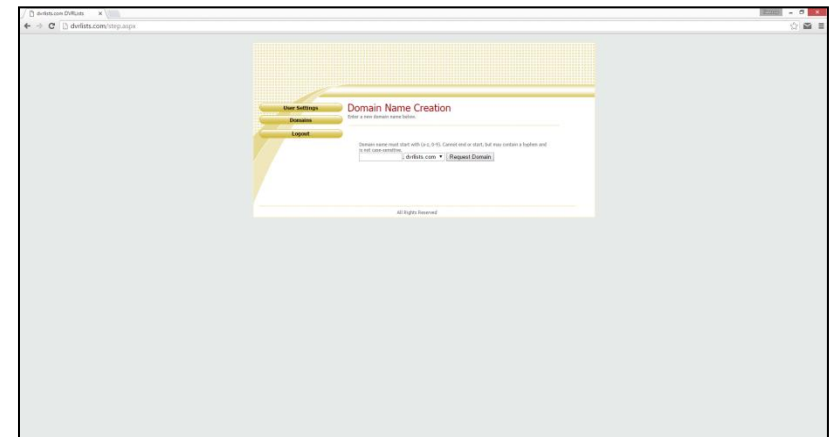
Email Address: _____
Password: _____



4. **Click** on **“Create Additional Domain Names”**



5. **Input** desired domain name



6. **Click** on **“Request Domain”**

Configuring DDNS Locally with DVR

1. From the DVR system, go to **Menu > Configuration** then select **Network**
Login prompt may appear while trying to access the Menu. Please login with the appropriate credentials.
2. Select **DDNS** from the **Network** sub menu
3. **Click on Enable DDNS**

Enable DDNS	<input type="checkbox"/>
DDNS Type	LTS
Server Address	ns1.dvrlists.com
Device Domain Name	
User Name	
Password	

When **Enable DDNS** option is checked **Device Domain**, **User Name**, and **Password** options will be selectable.

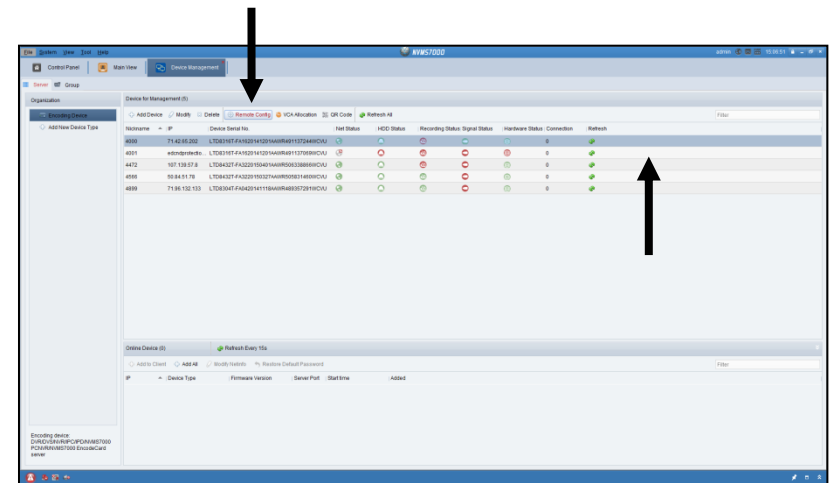
Enable DDNS	<input checked="" type="checkbox"/>
DDNS Type	LTS
Server Address	ns1.dvrlists.com
Device Domain Name	
User Name	
Password	

Device Domain Name will be the domain name requested from www.dvrlists.com and **User Name** and **Password** will be the login information associated with the DDNS account.

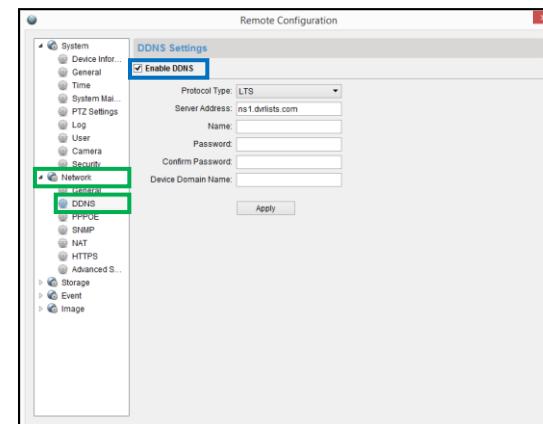
4. **Click** on **Apply** to update the DDNS information with the DVR
5. **Click** on **Test** to update the IP information to the DDNS server

Configuring DDNS Remotely with NVMS7000

1. Open **NVMS7000** software and select the appropriate **Account**
*Please review **Adding New Location with NVMS7000** if account has not been created.*
2. **Click** on **Remote Config**



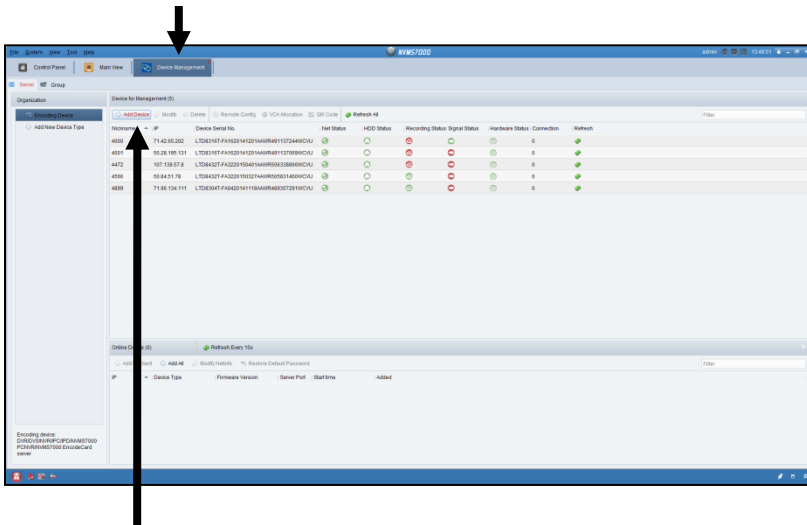
3. Select **Event** and **DDNS** then check **Enable DDNS**



Name and **Password** will be the login information associated with the DDNS account. **Device Domain Name** will be the DDNS domain name.

Adding New Location with NVMS7000

1. Open **NVMS7000** software
2. **Click on Device Management**



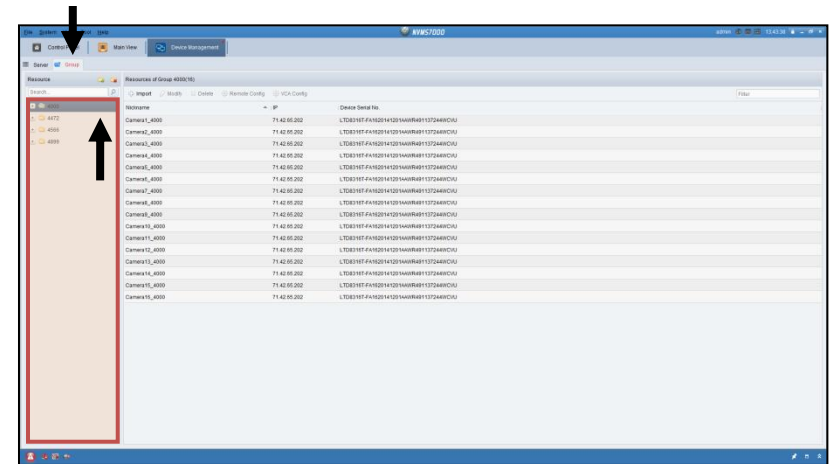
Click on Add Device

3. Fill out location information:
 - Nickname must be 4 digit account number
 - Address to be the IP address of the location
 - Port / User Name / Password

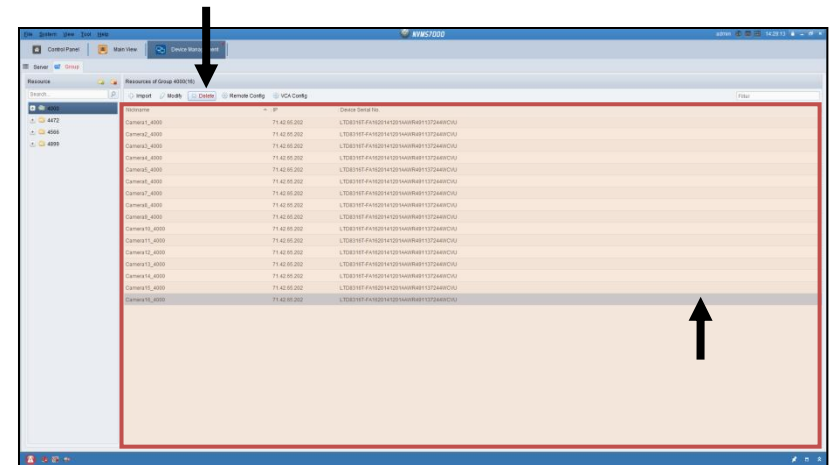
4. Make sure **“Export to Group”** is checked before adding location
5. **Click on the “Add”** button to add new site to the software

Removing Specific Cameras from NVMS7000

1. To **remove specific cameras** from NVMS7000 Software, **click on Group**
2. Select the **appropriate device** under the Resource tab

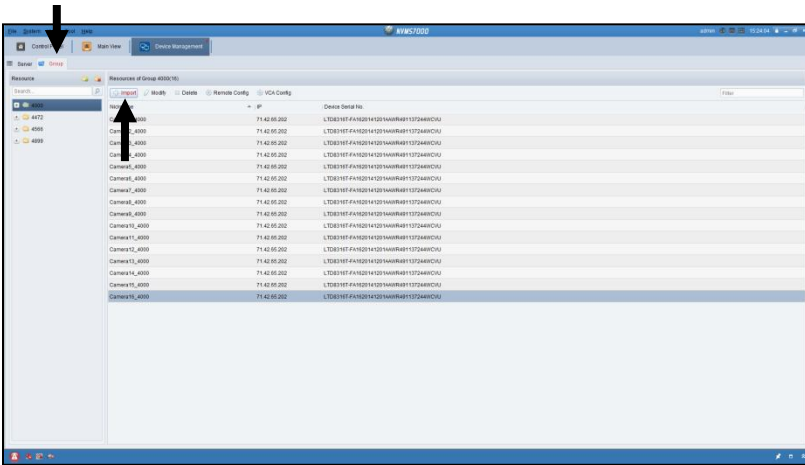


3. Select the **Camera(s)** individually from the Resource Group List
4. Select **Delete** to remove camera

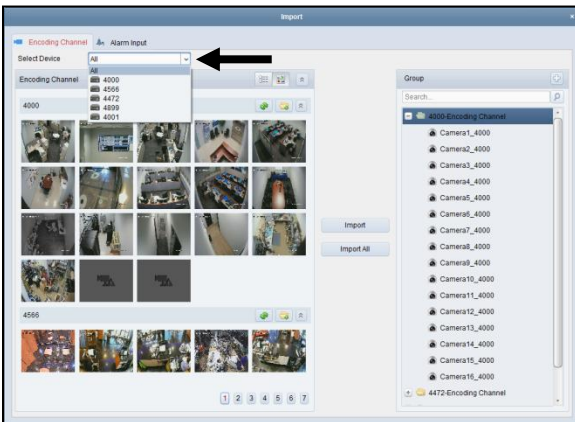


Adding Specific Cameras with NVMS7000

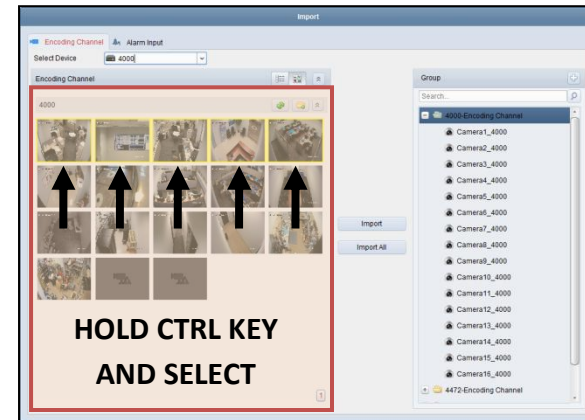
1. To add **specific cameras** to the NVMS7000 software, click on **Group**
2. **Click** on the **“Import”** button



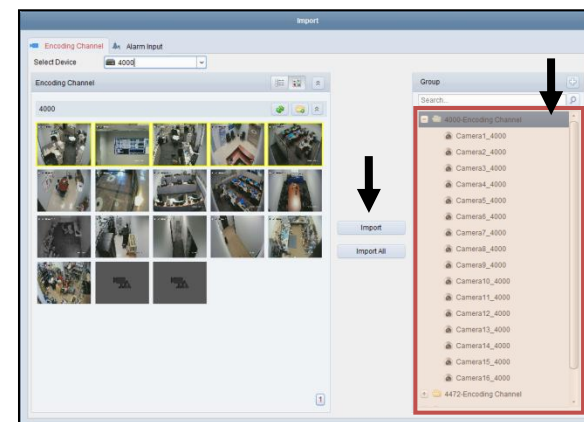
3. Select the **appropriate device**



4. Select the **specific cameras** to be added
*To select multiple cameras, hold down the **CTRL** key while **left clicking** on the mouse on the individual camera channels. **Any cameras selected will have a yellow highlight.***



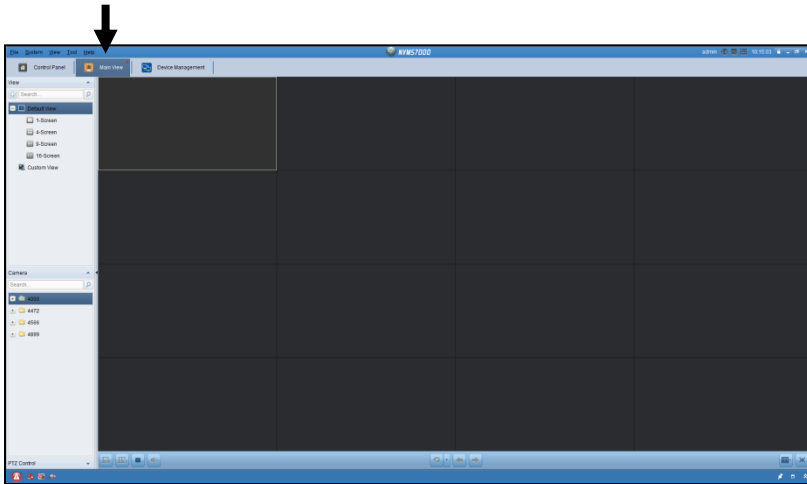
5. Select the **Group** label associated with the **device** and **click “Import”** to import the selected cameras, or alternatively **click “Import All”** to import all the cameras.



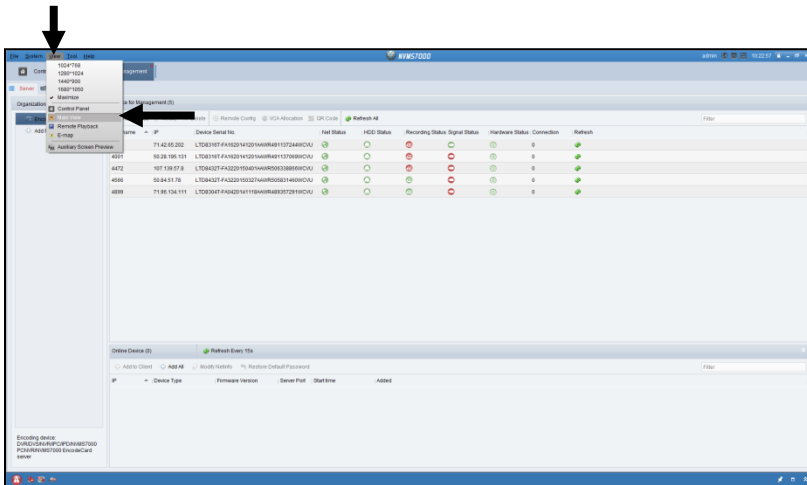
6. Once the cameras have been imported, **click** on the **“X”** on the upper right corner to close the window.

Connecting to Cameras with NVMS7000

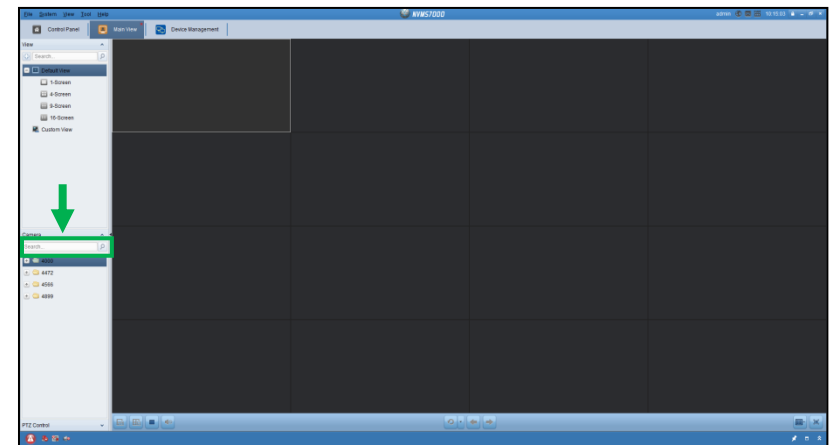
1. Open NVMS7000 software
2. **Click** on **Main View**



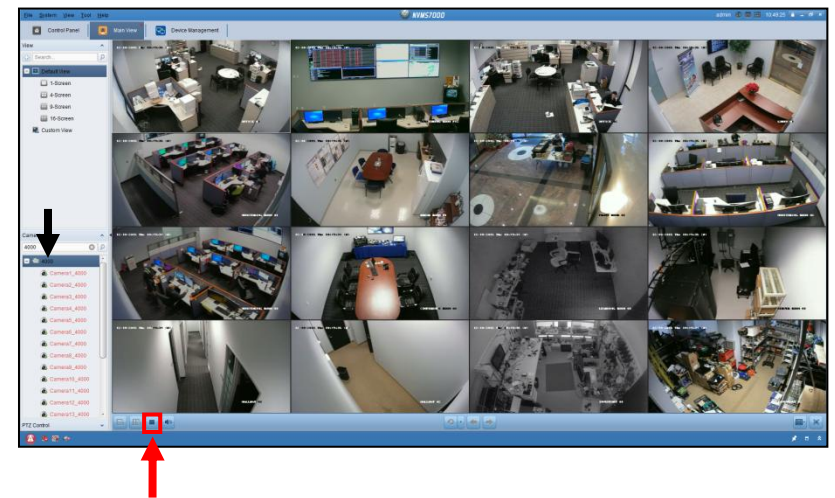
If the Main View option is not available, **click** on **View** from the top menu bar, and **click** on **Main View** from the sub menu.



3. Input appropriate site in the **Search** field



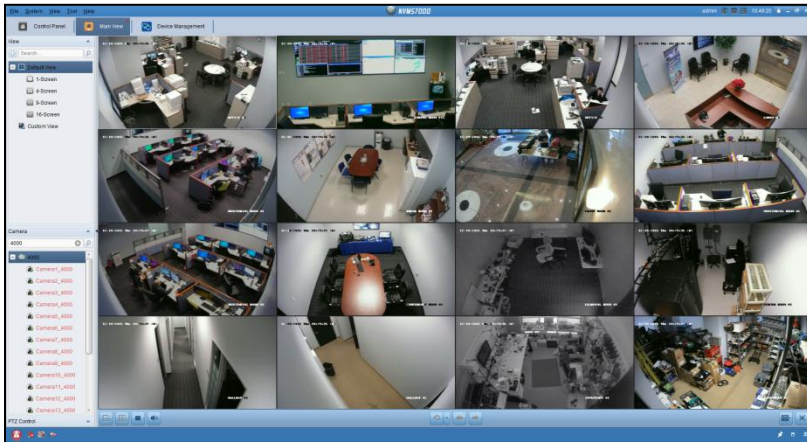
4. **Double click** on the **folder** (e.g. 4000) to **view** all the cameras associated with the group as assigned previously



5. **Click** the **Stop** button to **disconnect** the current session

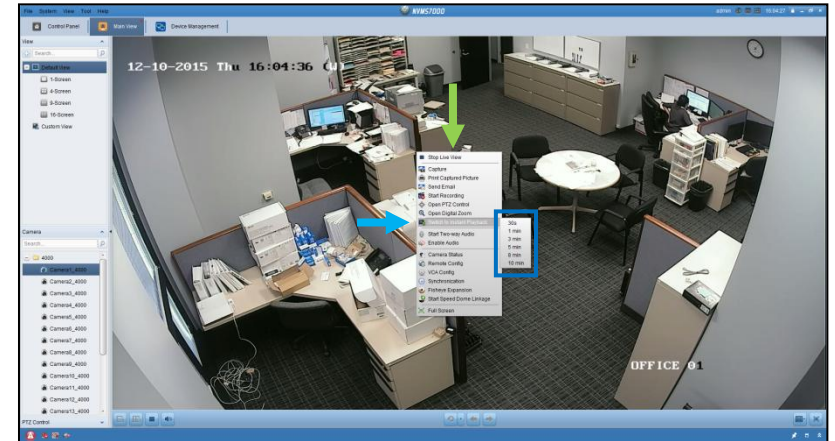
Instant Playback with NVMS7000

1. Open **NVMS7000** software
2. Connect to the **appropriate location**
3. **Double click** on an individual camera channel



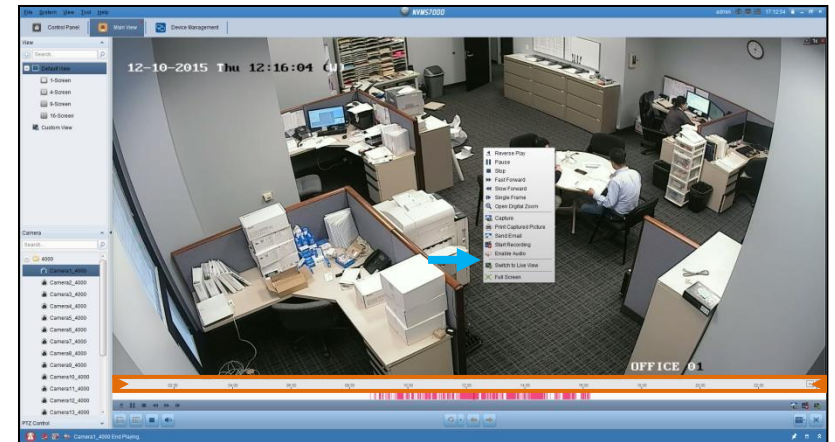
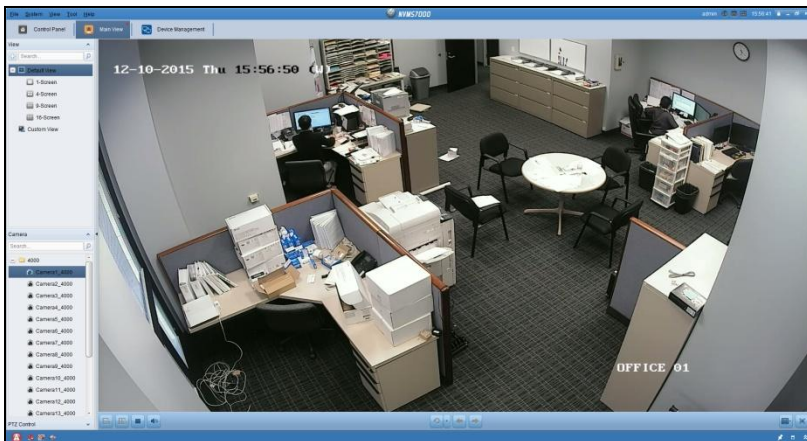
The camera view will now go into one channel mode.

4. **Right click** in one channel mode and select **"Instant Playback"**
5. Select a **desired interval** for review



Timeline bar will show up on bottom while in **Instant Playback** mode.

Highlighted markers within timeline bar represent video footage.



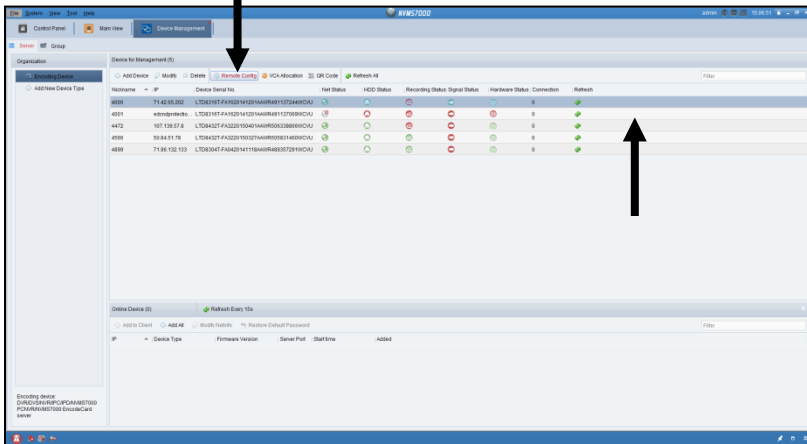
Scrolling up with mouse within the timeline bar will expand time selection.

Dragging (Click and Hold while Moving Mouse) will move timeline bar.

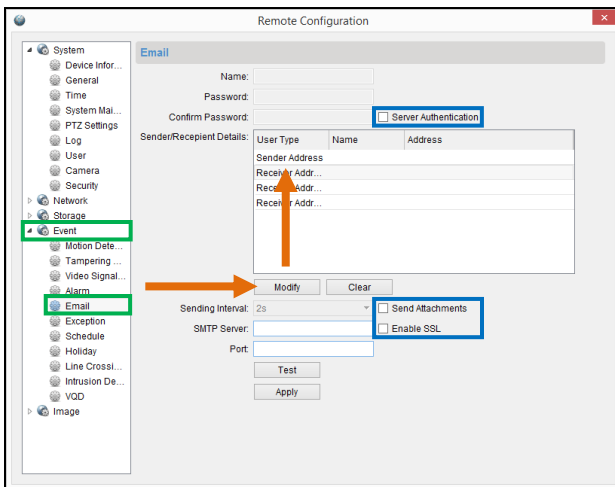
6. **Right click** in one channel mode and select **"Switch to Live View"** to finish

Email Notification Configuration

1. Select the associated **Account**
2. **Click on Remote Config**



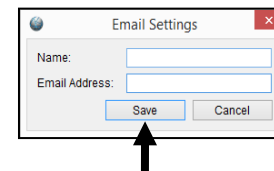
3. Select **Event** and **Email** then check **Server Authentication, Send Attachments, Enable SSL**



Once **Server Authentication** is selected, **Name, Password and Confirm Password** options will be available for input.

4. Input the following **Server Authentication** information:
Name: yourmailaccount@gmail.com
Password/Confirm Password: <yourmailpassword>
5. **Click on Sender/Receiver Address** and **click on Modify** to enter
An **Email Settings** window will now be displayed for the associated **Sender or Receiver Address**.

Input the following **Email Settings** information:
Name: Can be any name specified
Email Address: yourmailaccount@gmail.com



6. **Click on Save** once finished
7. Input the following **SMTP Server** and **Port** information:
SMTP Server: smtp.gmail.com
Port: 465
8. **Click on Test** to send a testing notification
Once an email has been received to the yourmailaccount@gmail.com account, **click on Apply**.